



ECO  OGL
OVAL ROSE HANDLE

■ SYSTEM TECHNOLOGY FOR THE DOOR



OVAL ROSE HANDLE

ECO **OVR**  OGL





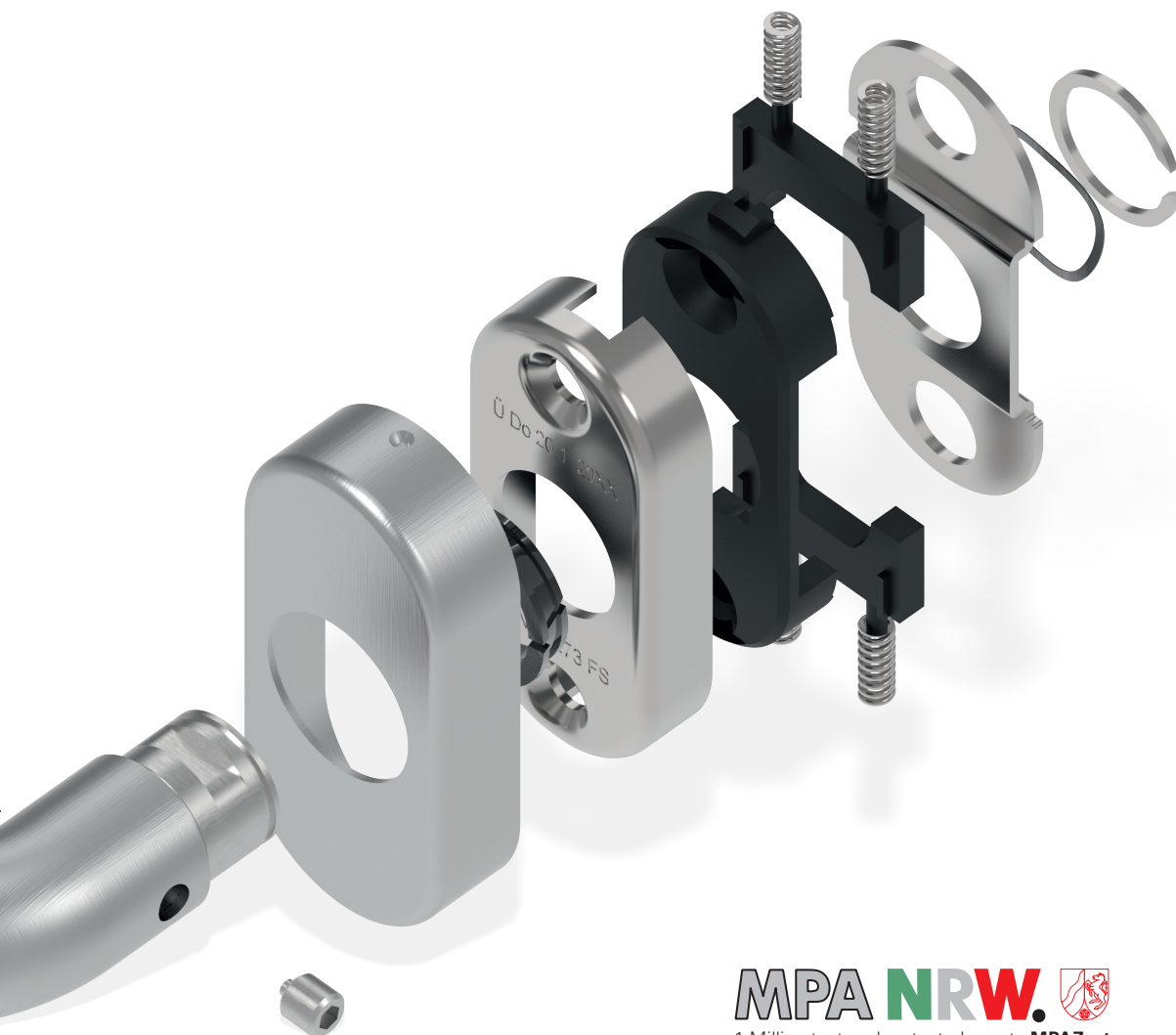
OGL – Oval rose handle with friction bearing technology

OGL Bearing technology

This object handle has a maintenance-free plastic friction bearing which is seated floating in the galvanized steel base rose and thus compensates radial and axial play.

Performance criteria ECO OGL

- **EN 1906**, User class 4
- **1 Million test cycles**, tested acc. to **MPAZert**
- **EN 1906**, Corrosion class 4
- **DIN 18273** Approved for fire- and smoke protection doors 
- **EN 179**, depending on lever handle type 
- **DIN-L / DIN-R** useable
- Return spring type A
- Available with or without positioning studs
- Maintenance-free lever bearing
- High-strength square pin connection
- Stable, double bearing handle guidance
- Flush base rose
(No drilling required for lever projection)
- Oval rose dimensions 70 x 33mm
- 8mm / 9mm Fire protection



MPA NRW 
 1 Million test cycles, tested acc. to **MPAZert**

- | | |
|--|---|
| <input checked="" type="checkbox"/> PUBLIC | <input checked="" type="checkbox"/> EDUCATION |
| <input checked="" type="checkbox"/> HEALTHCARE | <input checked="" type="checkbox"/> INDUSTRY |
| <input checked="" type="checkbox"/> OFFICE | <input checked="" type="checkbox"/> RESIDENTIAL |
| <input checked="" type="checkbox"/> TRANSPORT | <input checked="" type="checkbox"/> HOTEL |

Door types



Material

ER **Al** **

Classification key EN 1906 – OGL

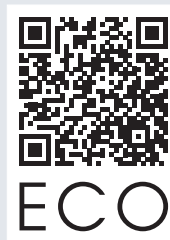
4	D9*	-	B1	1	4	0	A
---	-----	---	----	---	---	---	---

Stainless steel version

* 1 Million test cycles, tested acc. to **MPAZert**

** Aluminium F1
 or Aluminium F1 polished

OVR



ECO

ECO Website
bit.ly/2Vr4S39

SLOTTED SQUARE PIN

HIGH STRENGTH SQUARE PIN CONNECTION

- Slotted square pin with punching setscrew
- Visible mounting position due to grooves
- **DIN-L/DIN-R** useable



PASSIVE LEAF

HANDLE WITH RETURN SPRING

- Quadruple locking 90°
- Return spring type A
- **DIN-L/DIN-R** useable
- Following handle types are available for OVR passive leaf in stainless steel:
D-115, D-116, D-330, D-335, D-410, D-415

SLIDING ROSES

INVISIBLE SCREWING

Consisting of:

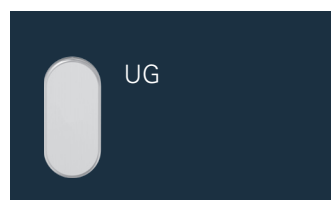
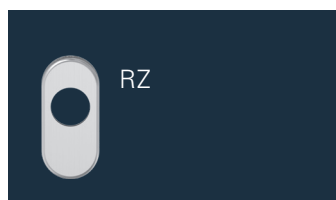
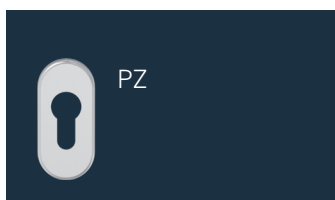
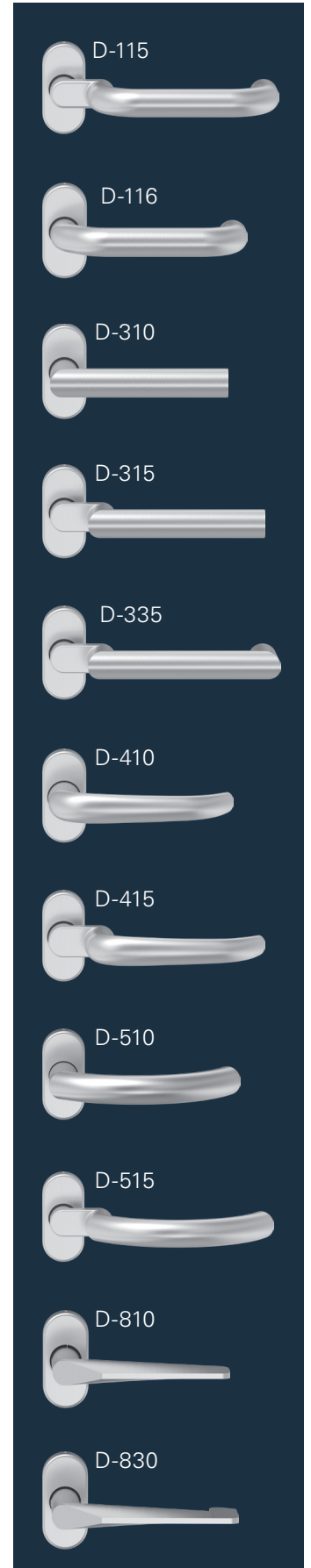
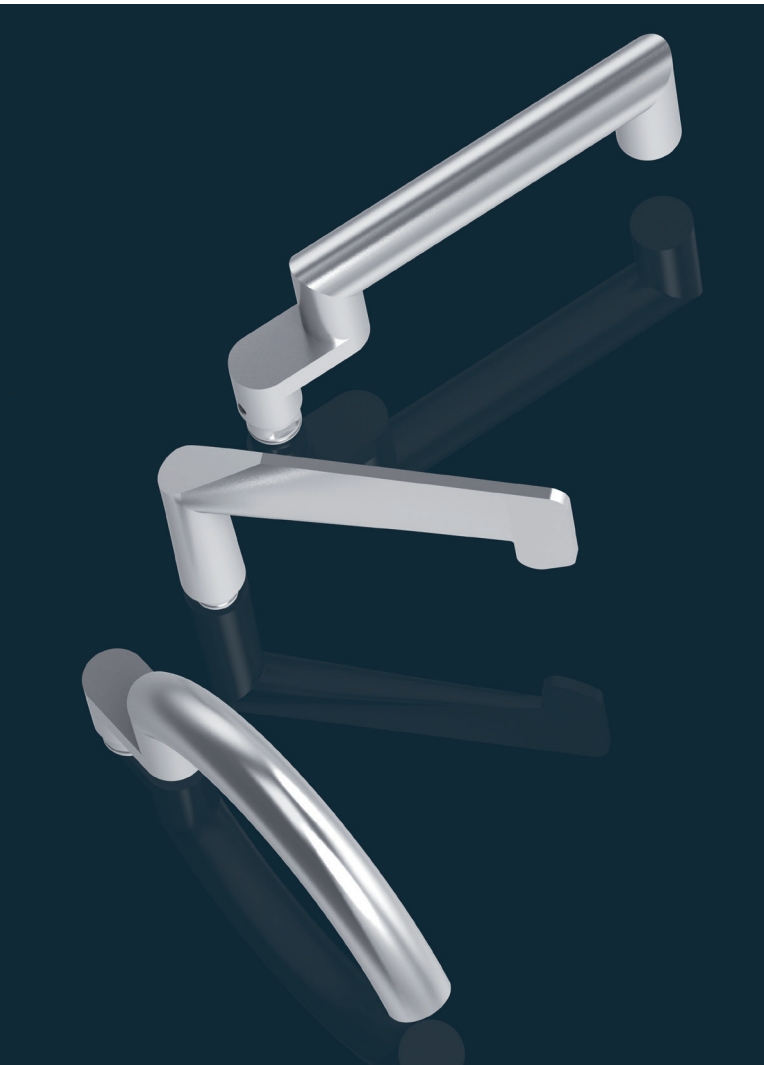
- Stainless steel cover rose
- Sliding and base rose made of zinc die-cast
- Base rose with screw countersink for M5
- Available in 6,5 and 9 mm height



OVR PRODUCT VARIANTS

TANGIBLE VARIETY

A wide range of knob and lever models is of course available for our OVR handles.



Key rosettes available either as screw-on or adhesive version.

ECO Schulte GmbH & Co. KG

Iserlohner Landstraße 89

D-58706 Menden

Phone: +49 2373 9276 - 0

Fax: +49 2373 9276 - 40

info@eco-schulte.de

www.eco-schulte.de

Your company imprint

GO DIGITAL

I'm also digital.

→ bit.ly/39ELoym

■ SYSTEM TECHNOLOGY FOR THE DOOR

