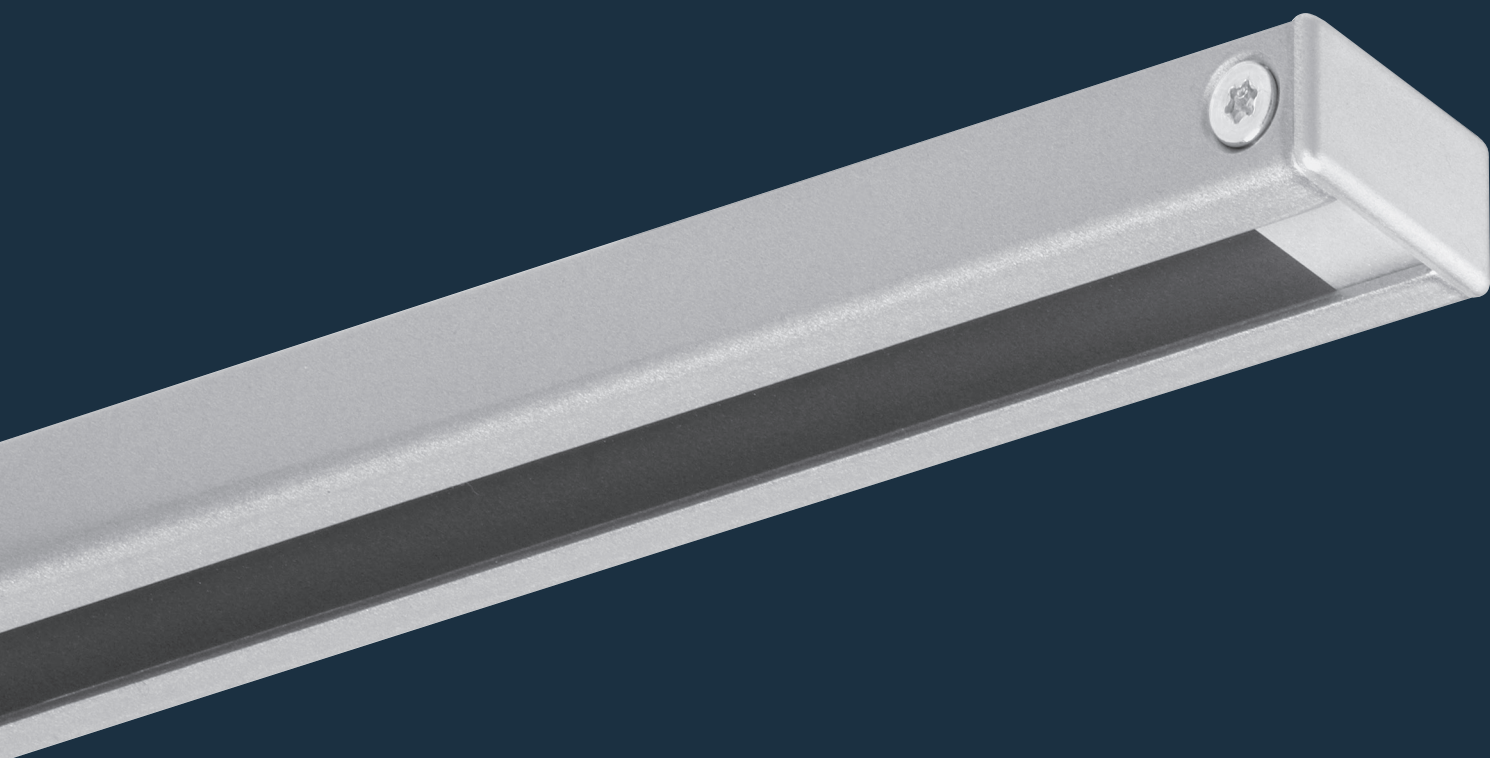


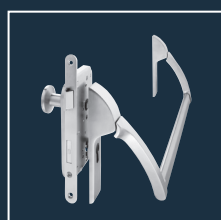
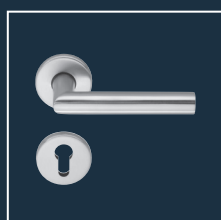
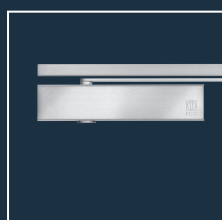


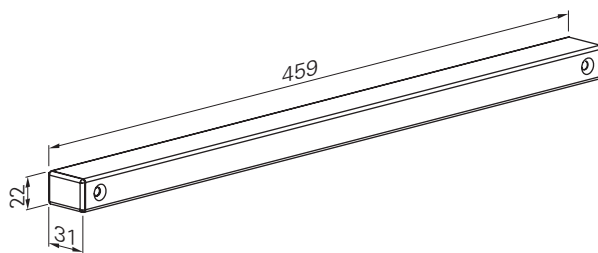
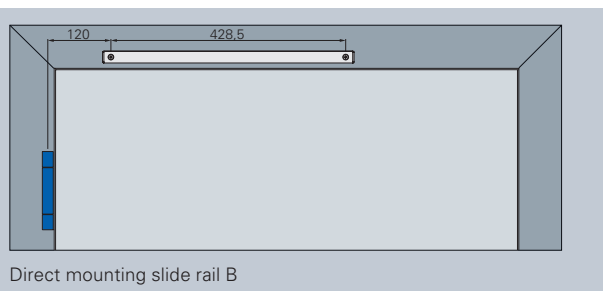
# ECO Slide rail B (Basis) / B-FKL

Product information



## ■ SYSTEM TECHNOLOGY FOR THE DOOR





### Slide rail - Basis (GS B)

For surface mounting

For the use in preventive fire-protection. Slide rail is tested acc. to EN 1154

Slide rail B	Colour	Article number
GS B (Si)	Silver RAL 9006	350220000A00000
GS B (W)	White RAL 9016	350220000E00000
GS B (Br)	Brwon RAL 8014	350220000D00000
GS B (S)	Black RAL 9005	350220000G00000

Delivery without arm, which is part of the door closer.

### Slide rail with mechanical hold open (GS B-FKL)

Hold-open angle adjustable from approx. 70° to 150°. For surface mounted slide rails

This version can be achieved afterwards by using slide rail B and accessory set FKL.  
Not suitable for the use in fire-protection. Please specify DIN direction when ordering.

Slide rail B-FKL	Colour	Article number
GS B (Si)	Silver RAL 9006	350220000A56000
GS B (W)	White RAL 9016	350220000E56000
GS B (Br)	Brown RAL 8014	350220000D56000
GS B (S)	Black RAL 9005	350220000G56000

Delivery without arm, which is part of the door closer.

ECO Schulte GmbH & Co. KG  
Iserlohner Landstraße 89  
D - 58706 Menden

Telefon: +49 2373/9276-0  
Fax: +49 2373/9276-40

[info@eco-schulte.de](mailto:info@eco-schulte.de)  
[www.eco-schulte.de](http://www.eco-schulte.de)

© ECO Schulte GmbH & Co. KG - Änderungen vorbehalten  
© ECO Schulte GmbH & Co. KG - Subject to change