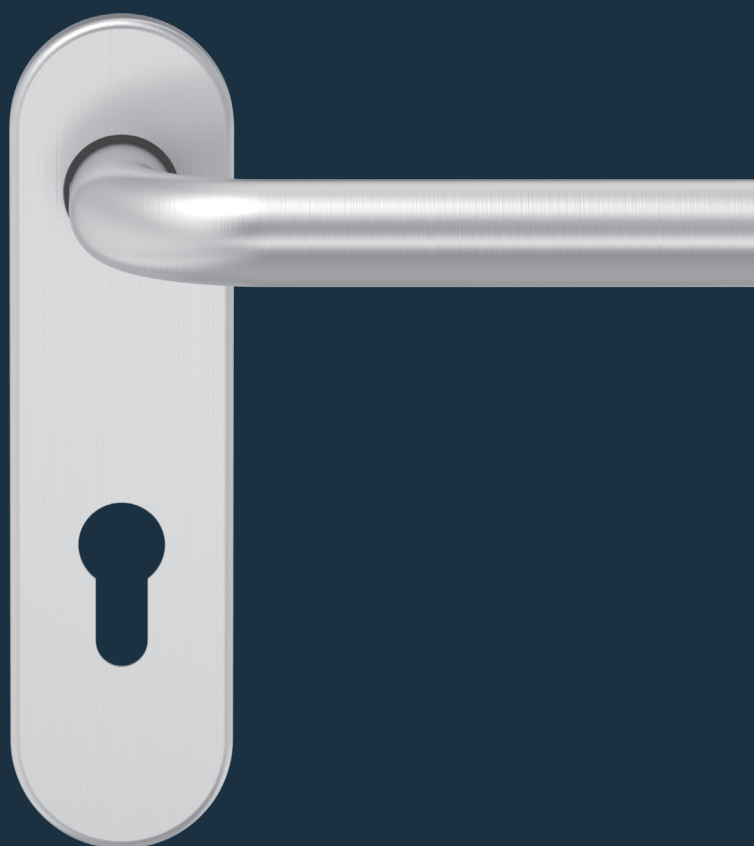


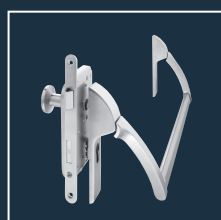
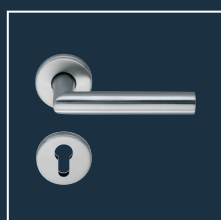


ECO D-210 Plate handle

Product information



■ SYSTEM TECHNOLOGY FOR THE DOOR



Product characteristics

Tested acc. to	EN 1906
With 9 mm spindle acc. to DIN 18273 fire protection tested	F
Restoring spring	-
Fixable bearing	■
Steel base with positioning studs	■
Concealed through-screw technology	■
DIN left / right	■

Classification key EN 1906

4	7	-	B1	1	4	0	U
---	---	---	----	---	---	---	---

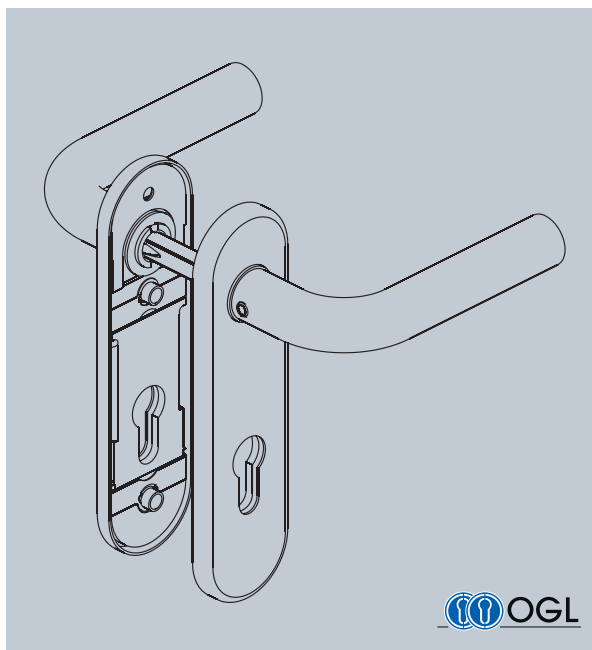
■ Yes - No □ Option



Steel door



Wooden door



Material:

ER ER
Stainless steel

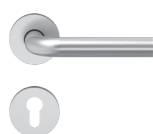
Al Al
Aluminium

Bearing technology:



PRODUCT FAMILY D-200

Standard handle



D-210

Short plate handle



D-210

Window handle



F-210

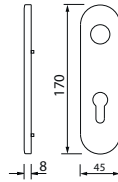
D-210 Short plate (K)



D-210 Short plate (K) with OGI – friction bearing technology

Lever guidance consists of a closed, maintenance-free friction bearing with self-lubricating plastic. Available with fixed knob or turnable knob and powerful locking (spring support). Bore diameter of Ø 23 mm at the lever collar necessary.

Utilization category class 4. Positioning studs Ø 8 x 5 mm



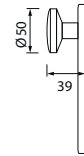
DD-PZ
FS-DD **F**



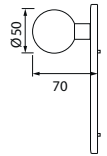
DD-BB



WC
AV

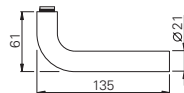


WSG K-130
FS-WSG **F**



WSG K-165
FS-WSG **F**

OGI – SHORT PLATE HANDLE (K)



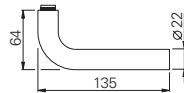
EN 1906 **F**

F = 4 7 - B1 1 4 0 A/U



	Ø	▧	Sets						Passive leaf sets	
S	21 mm	8 mm		106605.46	106600.46	106610.46	106660.46	106620.46		
F	21 mm	9 mm	306681.46	306600.46		306660.46	306663.46		306625.46	306618.46 306617.48

Finish: Stainless steel satin brushed. PVD and polished on request



EN 1906 **F**

F = 4 7 - D1 1 4 0 U



	Ø	▧	Sets						Passive leaf sets	
S	22 mm	8 mm			107605.30	107600.30	107610.30	107620.30		
F	22 mm	9 mm	307683.30	307683.30	307600.30		307660.30		307605.30	307618.30 307617.30

Finish: Aluminium anodized F1, further colours on request

ECO Schulte GmbH & Co. KG
Iserlohner Landstraße 89
D - 58706 Menden

Telefon: +49 2373/92 76 - 0
Fax: +49 2373/92 76 - 40

info@eco-schulte.de
www.eco-schulte.de

© ECO Schulte GmbH & Co. KG - Änderungen vorbehalten
© ECO Schulte GmbH & Co. KG - Subject to change