

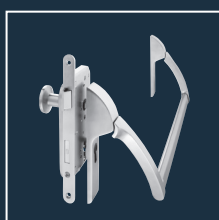
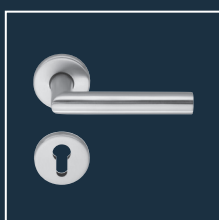


ECO Window handles

Product information



■ SYSTEM TECHNOLOGY FOR THE DOOR



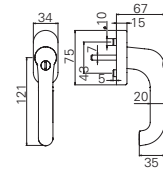
Object window handles ■ lockable



FO-110 A

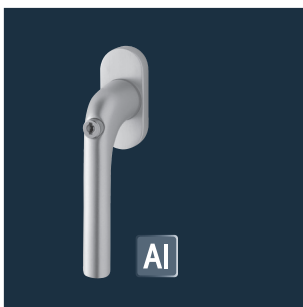
Lockable and object-suitable window handle with 90° ball latch. Push cylinder in the handle (1 key common locking). Concealed screwing with distance 43 mm.

Further pin lengths on request



ER AI

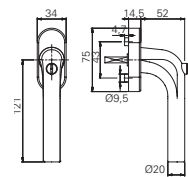
FO-110 A U-form	Colour	Studs	Pin	Article number
FO-110 A ER	Stainless steel satin brushed	∅ 10 mm	7 x 35 mm	102728064610835
FO-110 A AL	Aluminium, F1 anodized	∅ 10 mm	7 x 35 mm	102728063010835



FO-210 A

Lockable and object-suitable window handle with 90° ball latch. Push cylinder in the handle (1 key common locking). Concealed screwing with distance 43 mm.

Further pin lengths on request



AI

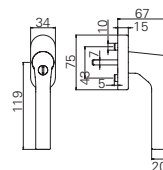
FO-210 A L-form	Colour	Studs	Pin	Article number
FO-210 A AL	Aluminium, F1 anodized	∅ 10 mm	7 x 35 mm	102728363010835



FO-310 A

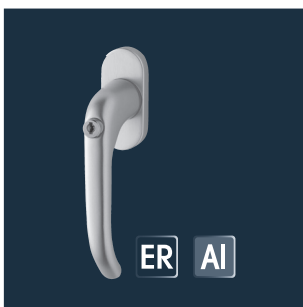
Lockable and object-suitable window handle with 90° ball latch. Push cylinder in the handle (1 key common locking). Concealed screwing with distance 43 mm.

Further pin lengths on request



ER AI

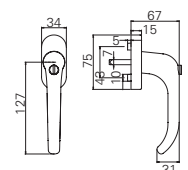
FO-310 A CL-form	Colour	Studs	Pin	Article number
FO-310 A ER	Stainless steel satin brushed	∅ 10 mm	7 x 35 mm	102728664610835
FO-310 A AL	Aluminium, F1 anodized	∅ 10 mm	7 x 35 mm	102728663010835



FO-410 A

Lockable and object-suitable window handle with 90° ball latch. Push cylinder in the handle (1 key common locking). Concealed screwing with distance 43 mm.

Further pin lengths on request



ER AI

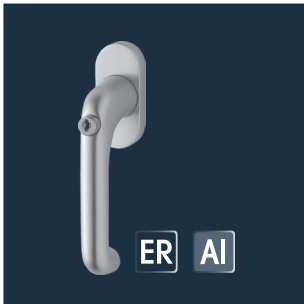
FO-410 A U-form	Colour	Studs	Pin	Article number
FO-410 A ER	Stainless steel satin brushed	∅ 10 mm	7 x 35 mm	102727044610835
FO-410 A AL	Aluminium, F1 anodized	∅ 10 mm	7 x 35 mm	102727043010835



The Certificate can also be found online at:
<http://zertifikate.eco-schulte.de>

! These lockable window handles are tested separately acc. to **EN 1627**: 2011-09, annex B, table B1 to 100 Nm.

Object window handles ■ TBT

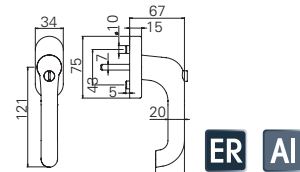


FO-110 TBT

Lockable and object-suitable window handle with 90° ball latch. Push cylinder in the handle (1 key common locking). Concealed screwing with distance 43 mm.

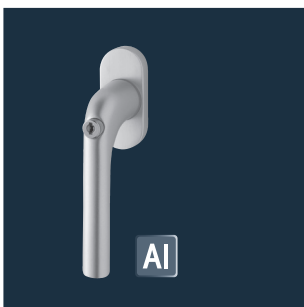
TBT-execution

Further pin lengths on request



ER AI

FO-110 TBT U-form	Colour	Studs	Pin	Article number
FO-110 TBT ER	Stainless steel satin brushed	∅ 10 mm	7 x 35 mm	102728064610935
FO-110 TBT AL	Aluminium, F1 anodized	∅ 10 mm	7 x 35 mm	102728063010935

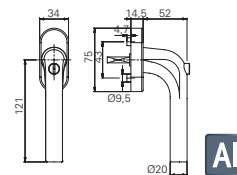


FO-210 TBT

Lockable and object-suitable window handle with 90° ball latch. Push cylinder in the handle (1 key common locking). Concealed screwing with distance 43 mm.

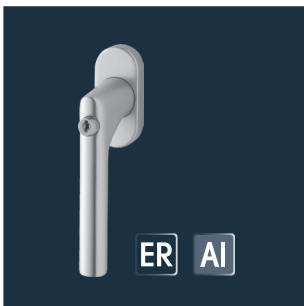
TBT-execution

Further pin lengths on request



AI

FO-210 TBT L-form	Colour	Studs	Pin	Article number
FO-210 TBT AL	Aluminium, F1 anodized	∅ 10 mm	7 x 35 mm	102728363010935

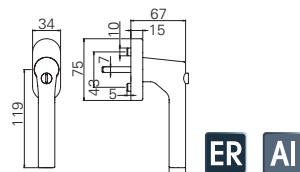


FO-310 TBT

Lockable and object-suitable window handle with 90° ball latch. Push cylinder in the handle (1 key common locking). Concealed screwing with distance 43 mm.

TBT-execution

Further pin lengths on request



ER AI

FO-310 TBT CL-form	Colour	Studs	Pin	Article number
FO-310 TBT ER	Stainless steel satin brushed	∅ 10 mm	7 x 35 mm	102728664610935
FO-310 TBT AL	Aluminium, F1 anodized	∅ 10 mm	7 x 35 mm	102728663010935

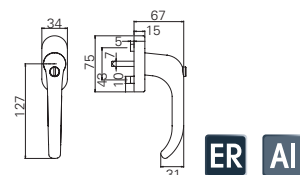


FO-410 TBT

Lockable and object-suitable window handle with 90° ball latch. Push cylinder in the handle (1 key common locking). Concealed screwing with distance 43 mm.

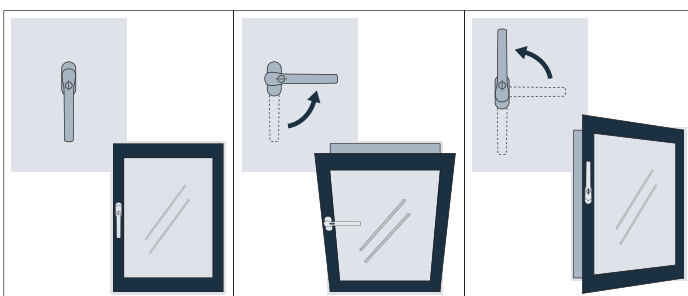
TBT-execution

Further pin lengths on request



ER AI

FO-410 TBT U-form	Colour	Studs	Pin	Article number
FO-410 TBT ER	Stainless steel satin brushed	∅ 10 mm	7 x 35 mm	on request
FO-410 TBT AL	Aluminium, F1 anodized	∅ 10 mm	7 x 35 mm	102727043010935



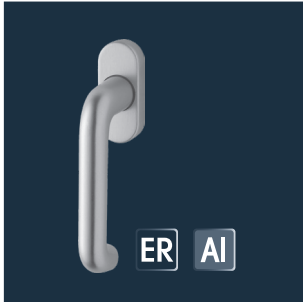
!

The TBT-technique (**T**ilt **b**efore **T**urn) allows a latching of the handle in the tilt position (90°-position) with a key.

A further rotation of the handle to opening position (180°-position) is only possible after unlocking again.

The window must be proportionally **prepared** to use this function. The window handle alone is not enough to make this function possible.

Object window handles

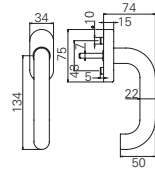


FO-110

Object-suitable window handle with 90° ball latch on stable substructure.

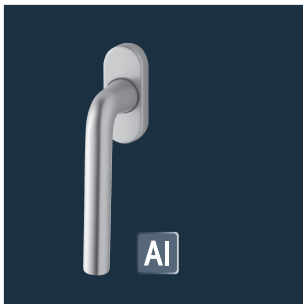
Concealed screwing with distance 43 mm.

Further pin lengths on request



ER AI

FO-110 u-Form	Colour	Studs	Pin	Art.-Nr.
FO-110 ER	Stainless steel satin brushed	∅ 10 mm	7 x 35 mm	102728064610735
FO-110 AL	Aluminium, F1 anodized	∅ 10 mm	7 x 35 mm	102728063010735

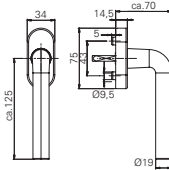


FO-210

Object-suitable window handle with 90° ball latch on stable substructure.

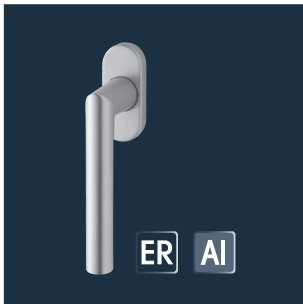
Concealed screwing with distance 43 mm.

Further pin lengths on request



AI

FO-210 L-form	Colour	Studs	Pin	Article number
FO-210 AL	Aluminium, F1 anodized	∅ 10 mm	7 x 35 mm	102728363010735

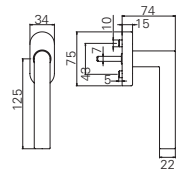


FO-310

Object-suitable window handle with 90° ball latch on stable substructure.

Concealed screwing with distance 43 mm.

Further pin lengths on request



ER AI

FO-310 CL-form	Colour	Studs	Pin	Article number
FO-310 ER	Stainless steel satin brushed	∅ 10 mm	7 x 35 mm	102728664610735
FO-310 AL	Aluminium, F1 anodized	∅ 10 mm	7 x 35 mm	102728663010735

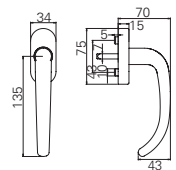


FO-410

Object-suitable window handle with 90° ball latch on stable substructure.

Concealed screwing with distance 43 mm.

Further pin lengths on request



ER AI

FO-410 U-form	Colour	Studs	Pin	Article number
FO-410 ER	Stainless steel satin brushed	∅ 10 mm	7 x 35 mm	102727044610735
FO-410 AL	Aluminium, F1 anodized	∅ 10 mm	7 x 35 mm	102727043010735

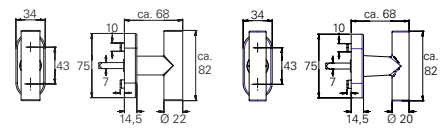


FO-333

Object-suitable window handle with 90° ball latch on stable substructure.

Concealed screwing with distance 43 mm.

Further pin lengths on request



ER

AI

FO-333 T-handle	Colour	Studs	Pin	Article number
FO-333 ER	Stainless steel satin brushed	∅ 10 mm	7 x 35 mm	102728864610735
FO-333 AL	Aluminium, F1 anodized	∅ 10 mm	7 x 35 mm	102728863010735

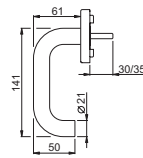
Windows handles



F-110

Window handle on nylon ground rose with positioning studs 10 / 12 mm.
Handle diameter 21 mm, 7 mm spindle, distance 43 mm, 90° snap-in point.

Further pin lengths on request



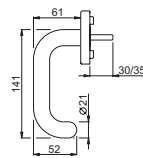
F-110 ER U-form	Colour	Studs	Pin	Article number
F-110 ER 12/30	Stainless steel satin brushed	Ø 12 mm	7 x 30 mm	270807.46
F-110 ER 12/35	Stainless steel satin brushed	Ø 12 mm	7 x 35 mm	270808.46
F-110 ER 10/30	Stainless steel satin brushed	Ø 10 mm	7 x 30 mm	270805.46
F-110 ER 10/35	Stainless steel satin brushed	Ø 10 mm	7 x 35 mm	270806.46



F-120

Window handle on nylon ground rose with positioning studs 10 / 12 mm.
Handle diameter 21 mm, 7 mm spindle, distance 43 mm, 90° snap-in point.

Further pin lengths on request



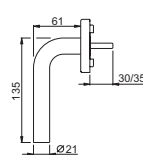
F-120 ER UR-form	Colour	Studs	Pin	Article number
F-120 ER 12/30	Stainless steel satin brushed	Ø 12 mm	7 x 30 mm	270817.46
F-120 ER 12/35	Stainless steel satin brushed	Ø 12 mm	7 x 35 mm	270819.46
F-120 ER 10/30	Stainless steel satin brushed	Ø 10 mm	7 x 30 mm	270815.46
F-120 ER 10/35	Stainless steel satin brushed	Ø 10 mm	7 x 35 mm	270816.46



F-210

Window handle on nylon ground rose with positioning studs 10 / 12 mm.
Handle diameter 21 mm, 7 mm spindle, distance 43 mm, 90° snap-in point.

Further pin lengths on request



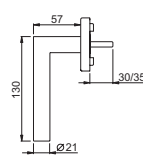
F-210 ER L-form	Colour	Studs	Pin	Article number
F-210 ER 12/30	Stainless steel satin brushed	Ø 12 mm	7 x 30 mm	270837.46
F-210 ER 12/35	Stainless steel satin brushed	Ø 12 mm	7 x 35 mm	270838.46
F-210 ER 10/30	Stainless steel satin brushed	Ø 10 mm	7 x 30 mm	270835.46
F-210 ER 10/35	Stainless steel satin brushed	Ø 10 mm	7 x 35 mm	270836.46



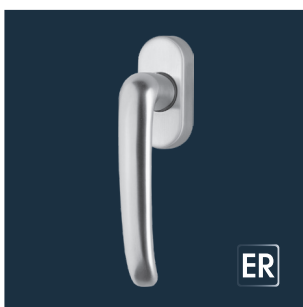
F-310

Window handle on nylon ground rose with positioning studs 10 / 12 mm.
Handle diameter 21 mm, 7 mm spindle, distance 43 mm, 90° snap-in point.

Further pin lengths on request



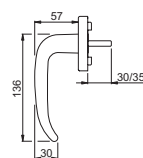
F-310 ER CL-form	Colour	Studs	Pin	Article number
F-310 ER 12/30	Stainless steel satin brushed	Ø 12 mm	7 x 30 mm	270867.46
F-310 ER 12/35	Stainless steel satin brushed	Ø 12 mm	7 x 35 mm	270868.46
F-310 ER 10/30	Stainless steel satin brushed	Ø 10 mm	7 x 30 mm	270865.46
F-310 ER 10/35	Stainless steel satin brushed	Ø 10 mm	7 x 35 mm	270866.46



F-410

Window handle on nylon ground rose with positioning studs 10 / 12 mm.
Handle diameter 21 mm, 7 mm spindle, distance 43 mm, 90° snap-in point.

Further pin lengths on request



F-410 ER U-form	Colour	Studs	Pin	Article number
F-410 ER 12/30	Stainless steel satin brushed	Ø 12 mm	7 x 30 mm	270701.46
F-410 ER 12/35	Stainless steel satin brushed	Ø 12 mm	7 x 35 mm	270703.46
F-410 ER 10/30	Stainless steel satin brushed	Ø 10 mm	7 x 30 mm	270700.46
F-410 ER 10/35	Stainless steel satin brushed	Ø 10 mm	7 x 35 mm	270704.46

ECO Schulte GmbH & Co. KG
Iserlohner Landstraße 89
D - 58706 Menden

Telefon: +49 2373/9276-0
Fax: +49 2373/9276-40

info@eco-schulte.de
www.eco-schulte.de

© ECO Schulte GmbH & Co. KG - Änderungen vorbehalten
© ECO Schulte GmbH & Co. KG - Subject to change