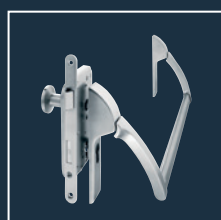
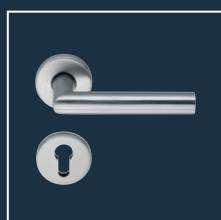
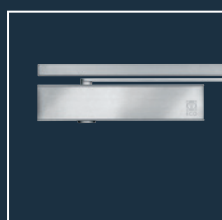


# Locks for bathroom doors and sanitary partitions ■ Lock set

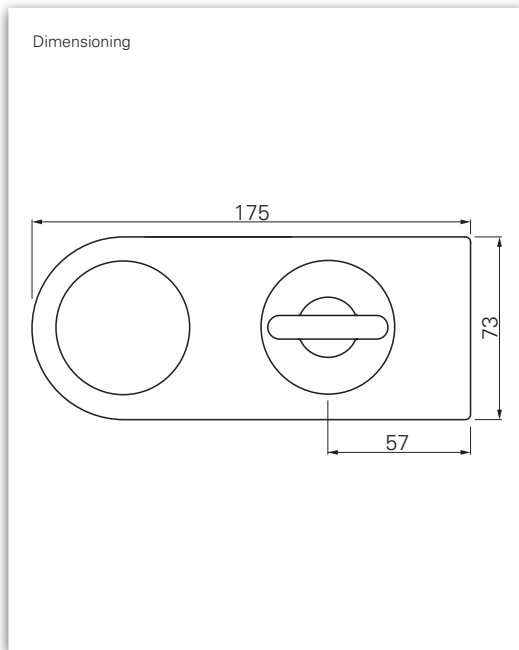
Product information



## ■ SYSTEM TECHNOLOGY FOR THE DOOR



## Locks for bathroom doors and sanitary partitions ■ Lock set



### Description

- DIN right / left WC: usable
- With 2 knobs, WC-lock and red / white indicator
- Emergency opening via external spindle (AV)
- Concealed mounting plate
- Spindle 8 mm
- Further colours on request



White  
RAL 9010\*



Dark grey  
RAL 7030 / 7038\*



Red  
RAL 3003\*



Dark blue  
RAL 5011 / 5013\*



Blue  
RAL 5002\*



Black  
RAL 9005\*

\*RAL colour similar. Colour range see following page.

WC-lock set Nylon	Dead bolt	Article number	Material
Lock set WC-hole	Dead bolt flush	260456	Nylon
Lock set WC-hole	Dead bold cranked	260459	Nylon
Lock set PZ-hole	Dead bolt flush (right)	260454	Nylon
Lock set PZ-hole	Dead bolt flush (left)	260455	Nylon
Lock set PZ-hole	Dead bolt cranked (right)	260452	Nylon
Lock set PZ-hole	Dead bolt cranked (left)	260451	Nylon

Ku



WC-lock set Stainless steel	Dead bolt	Article number	Material
Lock set WC-hole	Dead bolt flush	260456.46	Stainless steel
Lock set WC-hole	Dead bold cranked	260459.46	Stainless steel
Lock set PZ-hole	Dead bolt flush	260455.46	Stainless steel
Lock set PZ-hole	Dead bold cranked	260451.46	Stainless steel

ER



WC-lock set Aluminium	Dead bolt	Article number	Material
Lock set WC-hole	Dead bolt flush	260456.30	Aluminium
Lock set WC-hole	Dead bold cranked	260459.30	Aluminium
Lock set PZ-hole	Dead bolt flush	260455.30	Aluminium
Lock set PZ-hole	Dead bold cranked	260451.30	Aluminium

AI



## Sanitary partitions ■ Colour range

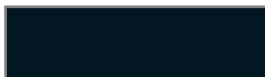
### RAL colour similar\* Standard

RAL 3003



01 red

RAL 9005



02 black

RAL 9010



08 white

RAL 5002



09 blue

RAL 5011 / 5013



21 dark blue

RAL 7030 / 7038



37 dark grey

### On request

RAL 8022



04 dark brown

RAL 6029



05 green

RAL 1021



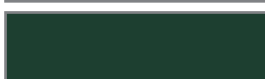
07 yellow

RAL 3007



18 dark red

RAL 6012



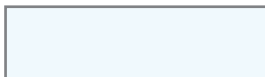
19 dark green

RAL 7043



20 grey

RAL 9016



15 white



ECO Schulte GmbH & Co. KG  
Iserlohner Landstraße 89  
D - 58706 Menden

Telefon: +49 2373/9276-0  
Fax: +49 2373/9276-40

[info@eco-schulte.de](mailto:info@eco-schulte.de)  
[www.eco-schulte.de](http://www.eco-schulte.de)

© ECO Schulte GmbH & Co. KG - Änderungen vorbehalten  
© ECO Schulte GmbH & Co. KG - Subject to change