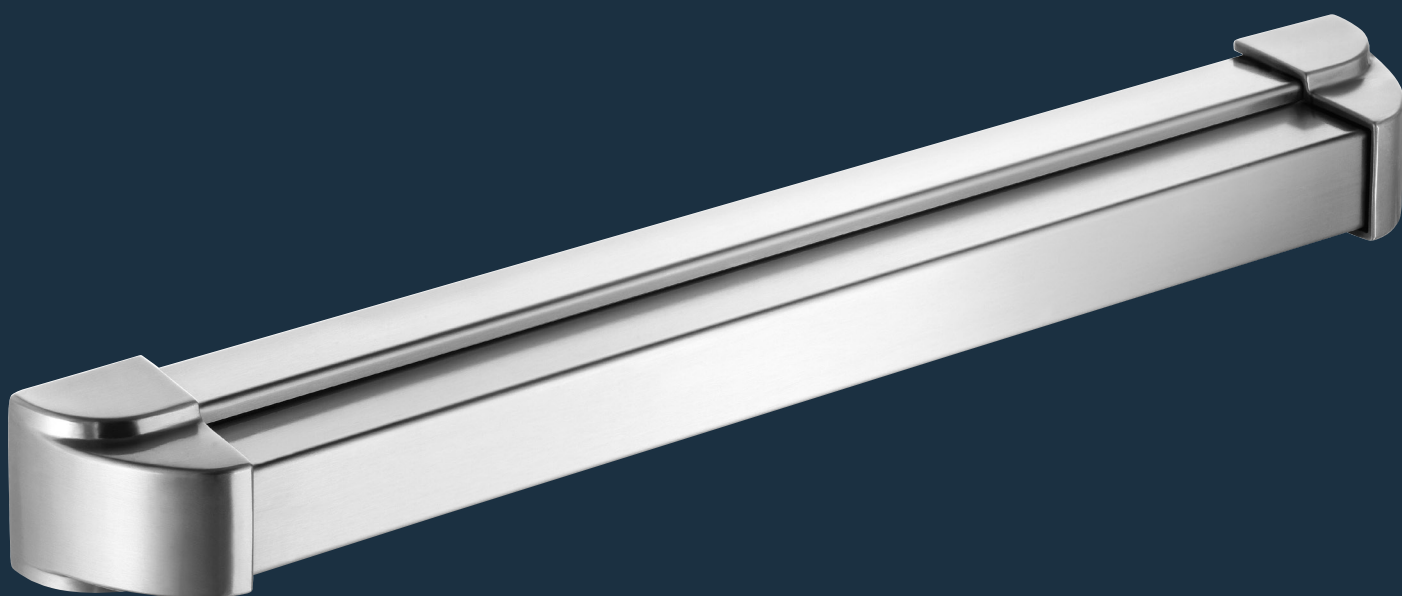


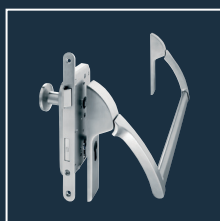
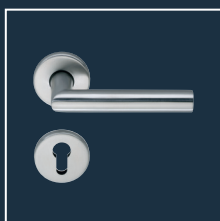



ECO EPN 2000 II

Product information

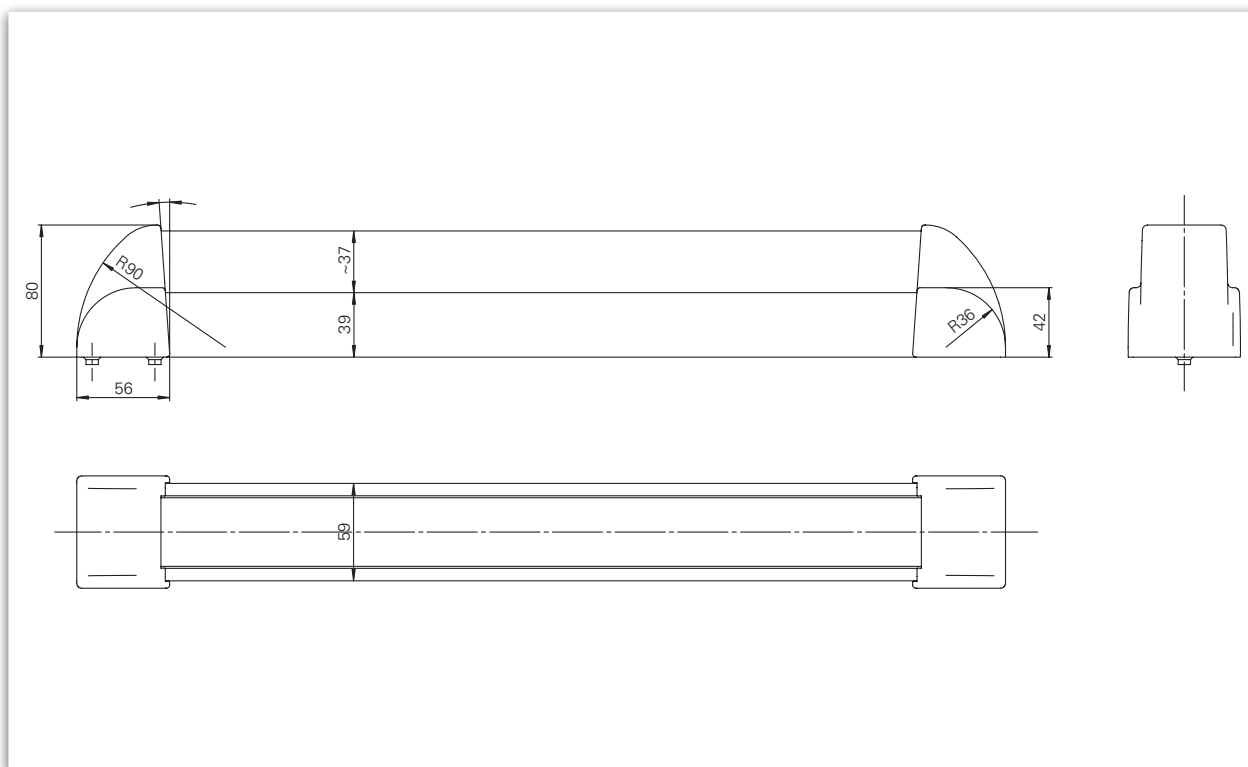


■ SYSTEM TECHNOLOGY FOR THE DOOR



Product characteristics		
Mode of operation	Touchbar Pushbar	■ -
Finish	Stainless steel	■
	Aluminium F1 coated	■
	Nylon coated	□
Fixing axis	1.000 mm*	■
	1.250 mm*	■
DIN left / right usable		■
Suitable for the use on fire and smoke control doors	F	■
Tested acc. to EN / DIN	EN 1125 	■


■ Yes - No □ Option



EPN 2000 II

Description

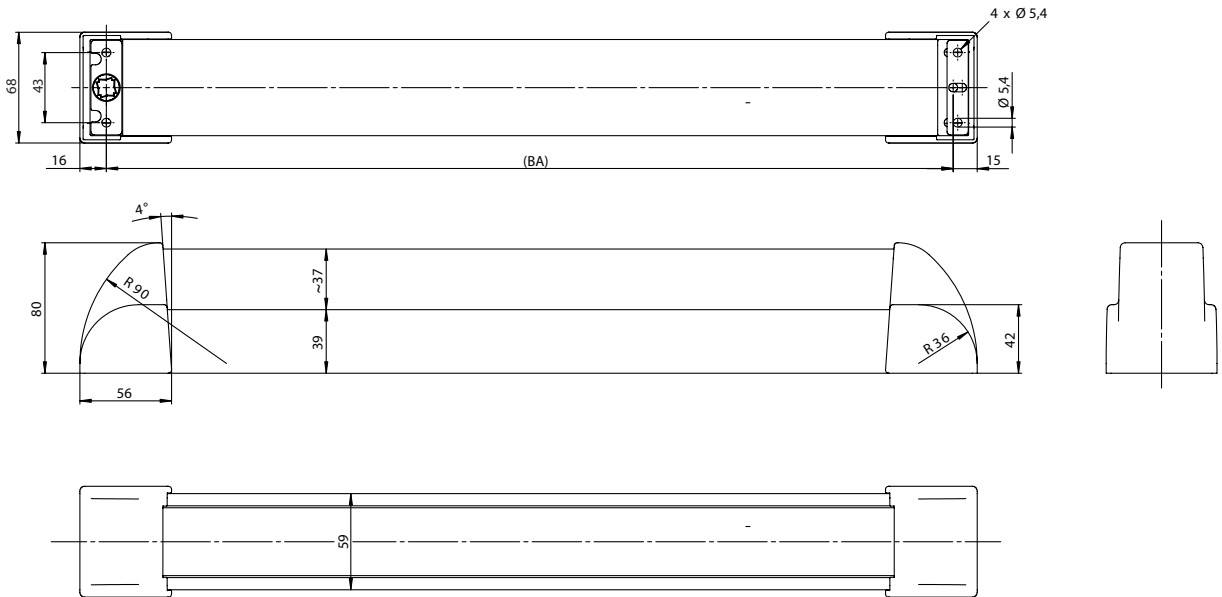
- Tested acc. to **EN 1125, EN 1634**
- Can be used according to **EN 1125** only with tested and approved lock
- Suitable for the use on fire- and smoke control doors according testing
- Screw-on version
- DIN left / right usable
- Finish:
Stainless steel
Aluminium F1 coated


 *Manufacturing of special lengths on request and against surcharge possible.

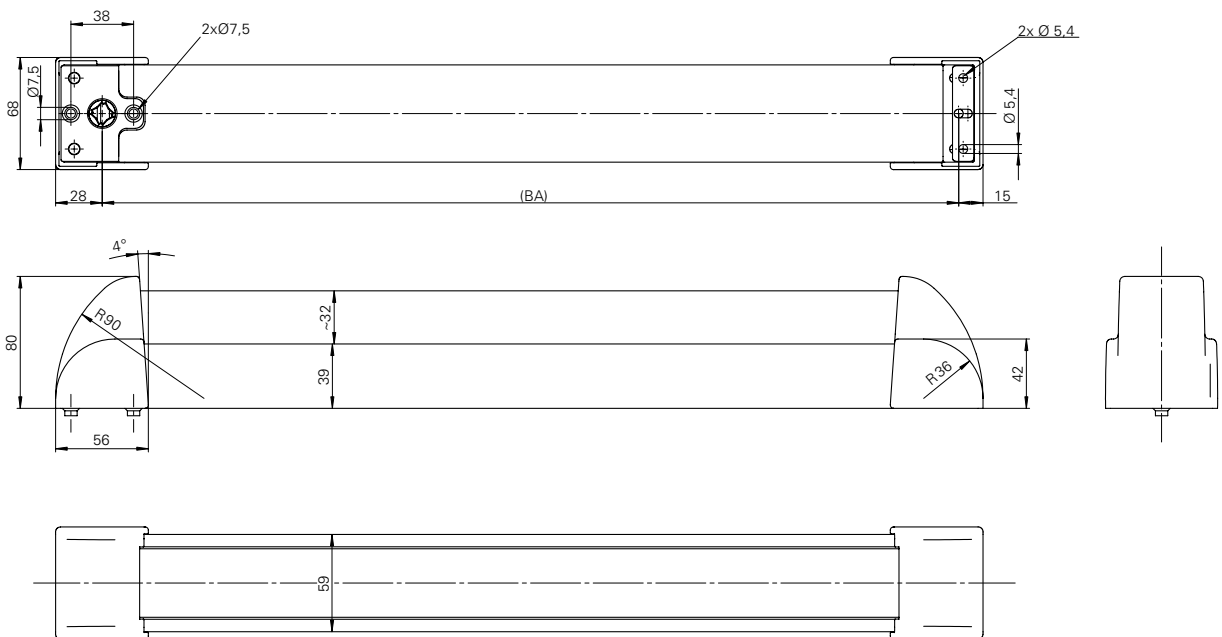
Installation situation

EPN 2000 II

EPN 2000 II for profile frame doors / screw-on version for active and passive leaf



EPN 2000 II for wooden and steel doors / screw-through version for active leaf



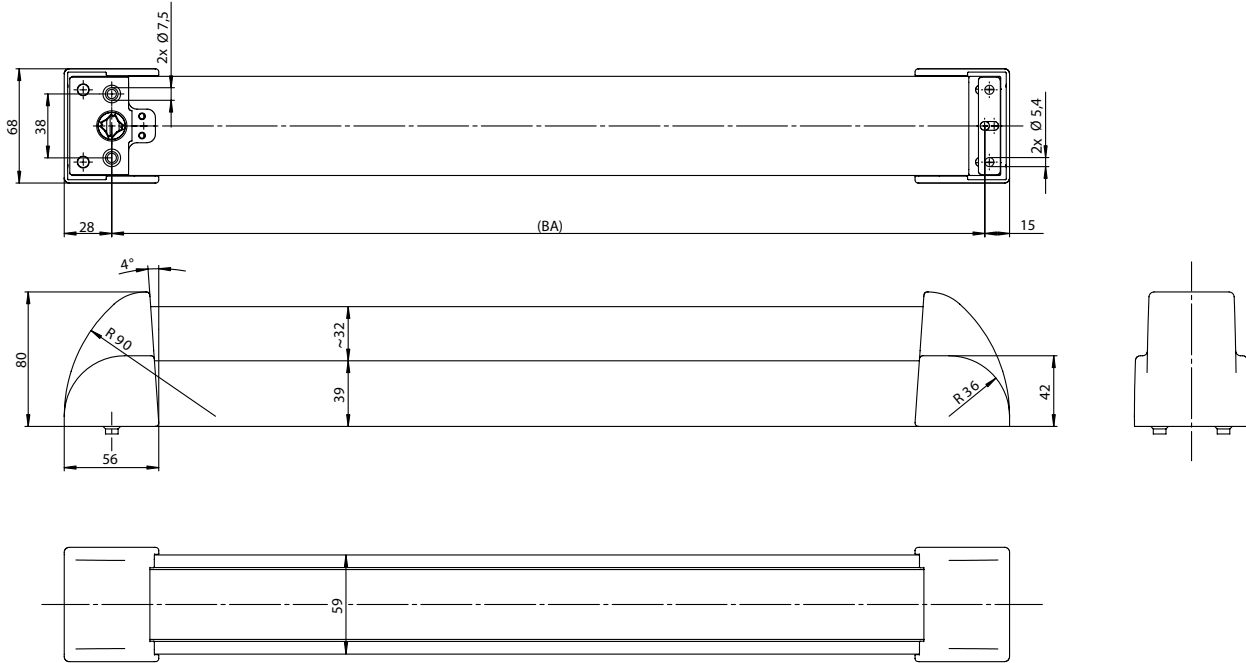


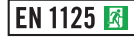
ECO

Installation situation

EPN 2000 II

EPN 2000 II for wooden and steel doors / screw-through version for passive leaf





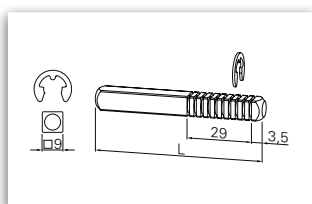
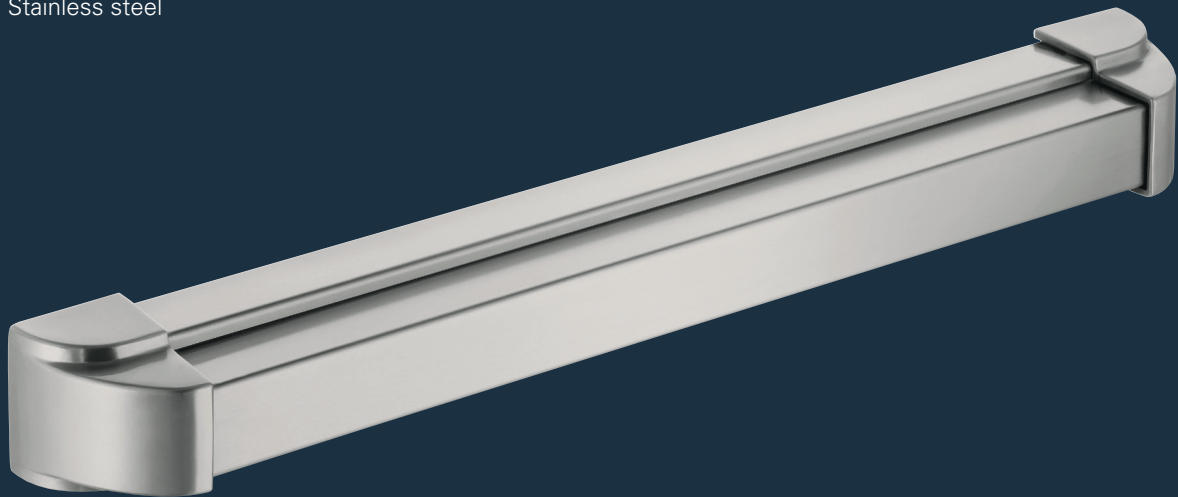
reddot design award
winner 2010

EPN 2000 II Stainless steel	Fixing axis (BA)	Rotation angle	Article number
Screw-on version	1.000 mm	30°	106706024630080
		40°	106706024640080
		45°	106706024600080
	1.250 mm	30°	106706044630080
		40°	106706044640080
		45°	106706044600080



EPN 2000 II Stainless steel	Fixing axis (BA)	Leaf	Rotation angle	Article number
Screw-through version	1.000 mm	Active leaf	45°	106706024600090
		Passive leaf		106707024600090
	1.250 mm	Active leaf		106708044600090
		Passive leaf		106707044600090

EPN 2000 II
Stainless steel

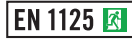


Length	Article number
55 mm	119007944300030
75 mm	119007954300030
95 mm	119007964300030

*Manufacturing of special
lengths on request and against
surcharge possible.



EPN 2000 II ▪ Touchbar



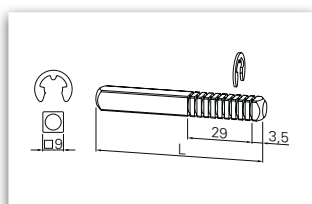
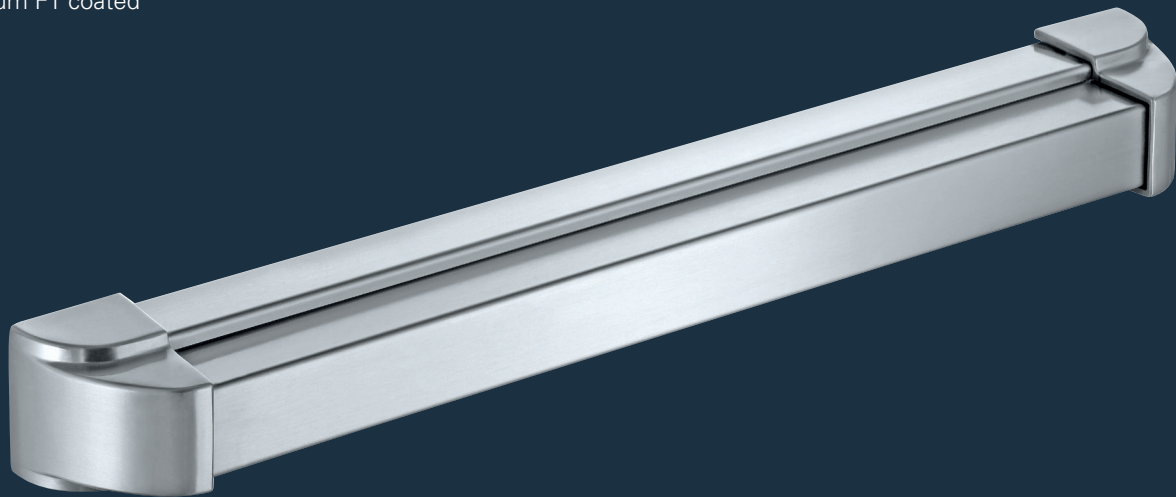
reddot design award
winner 2010



EPN 2000 II Aluminium F1 coated	Fixing axis (BA)	Rotation angle	Article number
Screw-on version	1.000 mm	30°	106706023030080
		40°	106706023040080
		45°	106706023000080
	1.250 mm	30°	106706043030080
		40°	106706043040080
		45°	106706043000080

EPN 2000 II Aluminium F1 coated	Fixing axis (BA)	Leaf	Rotation angle	Article number
Screw-through version	1.000 mm	Active leaf	45°	106706023000090
		Passive leaf		106707023000090
	1.250 mm	Active leaf		106706043000090
		Passive leaf		106707043000090

EPN 2000 II
Aluminium F1 coated



Length	Article number
55 mm	119007944300030
75 mm	119007954300030
95 mm	119007964300030

ECO Schulte GmbH & Co. KG
Iserlohner Landstraße 89
D - 58706 Menden

Telefon: +49 2373/9276-0
Fax: +49 2373/9276-40

info@eco-schulte.de
www.eco-schulte.de

© ECO Schulte GmbH & Co. KG - Änderungen vorbehalten
© ECO Schulte GmbH & Co. KG - Subject to change