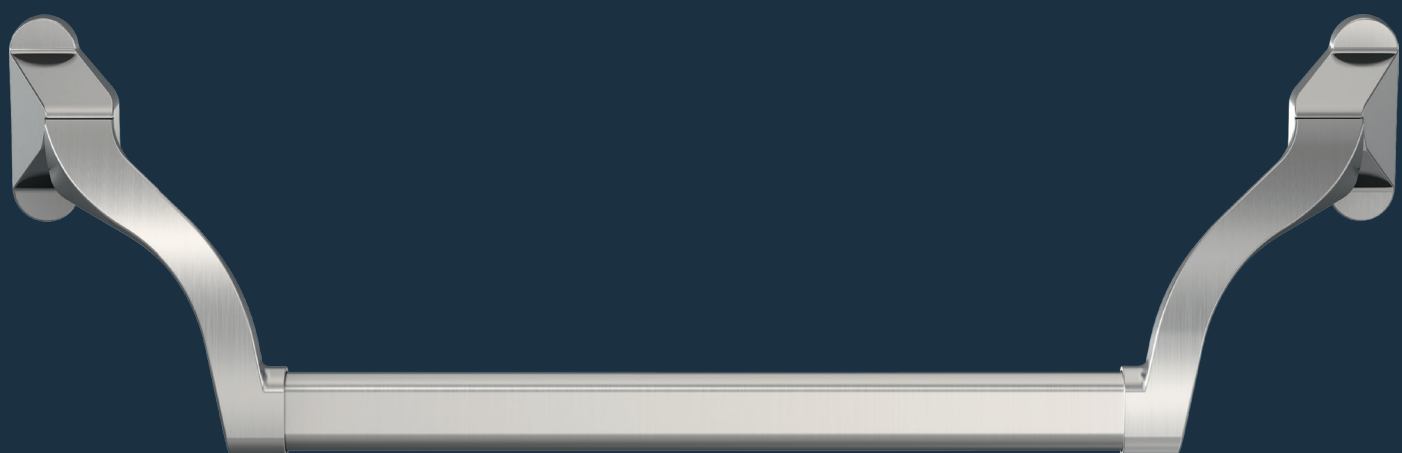


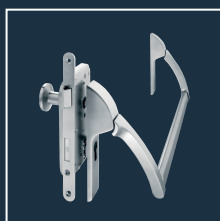
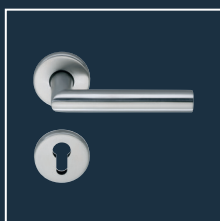
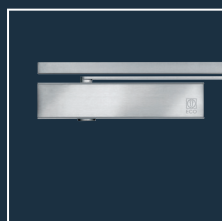



# ECO EPN 950

## Product information

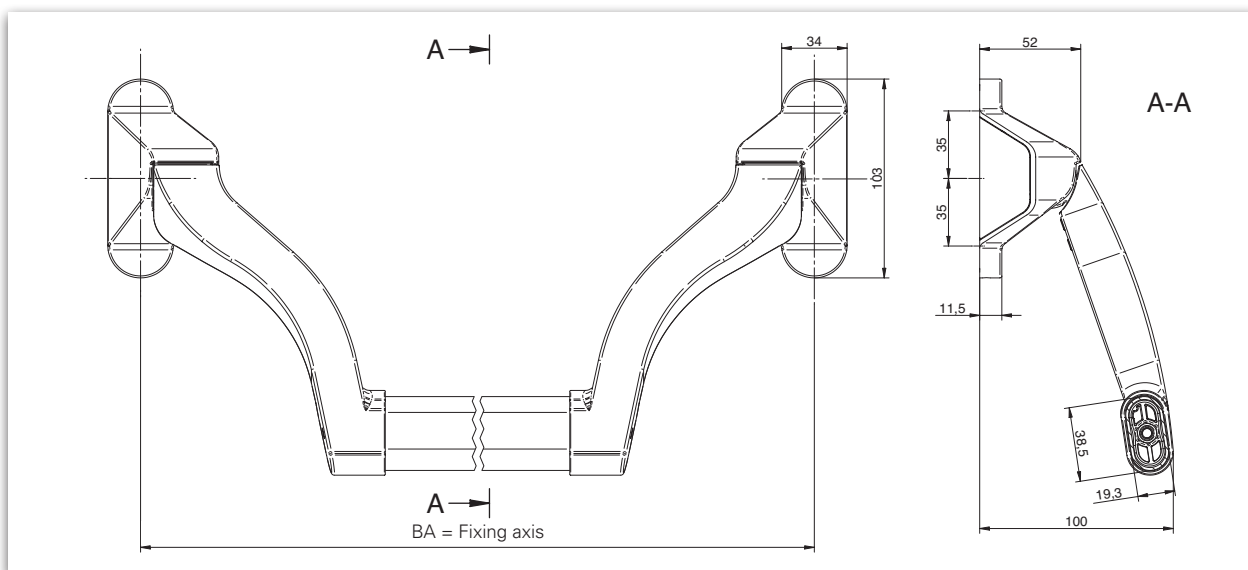


### ■ SYSTEM TECHNOLOGY FOR THE DOOR



Product characteristics		
Mode of operation	Touchbar Pushbar	- ■
Finish	Stainless steel	■
	Aluminium F1 coated	■
Grip tube	900*	■
	1.150*	■
	1.500*	□
DIN left / right usable		■
Suitable for the use on fire- and smoke control doors	<b>F</b>	■
Tested acc. to DIN / EN	<b>EN 1125</b> 	■

■ Yes - No □ Option



Dimensioning: EPN 950 (subject to change)

### Description

#### EPN 950 / Pushbar

The arms are highly cranked and enable the use of electronic key cylinders.

- Tested acc. to **EN 1125, EN 1634, EN 1191**
- Can be used according to **EN 1125** only with tested and approved lock
- Suitable for the use on fire- and smoke control doors according testing
- DIN left / right usable
- Arms highly cranked, suitable in particular for electronic key cylinders and short PZ distances.
- Large, stable grip tube (vandalism)
- High-strength screwing of arm and tube

- Finish:
  - Stainless steel satin brushed\*
  - Silver Aluminium F1 coated\*\*
- Gear unit: Steel zinc-plated

\*Grip tube has to be ordered separately  
\*\* Please see our notes

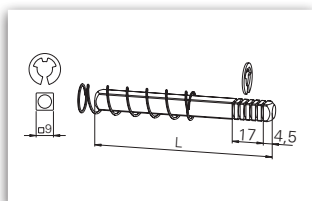
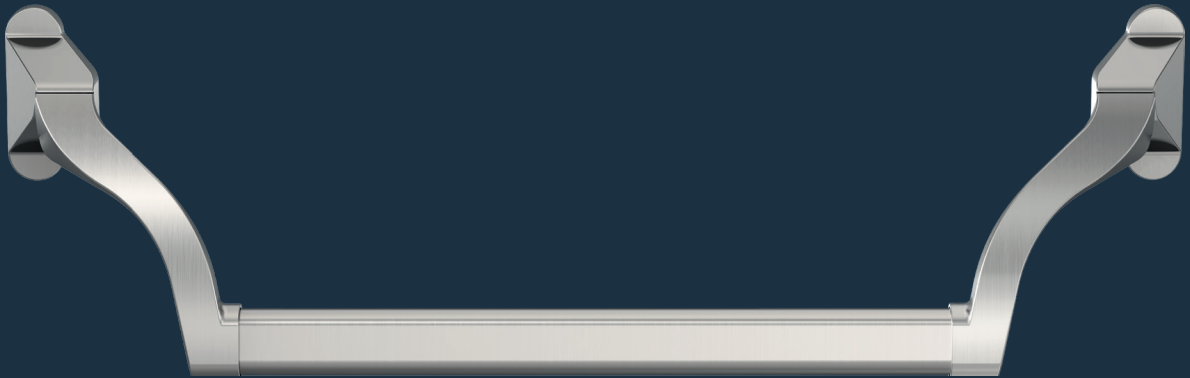




EPN 950 Stainless steel *	Rotation angle	Article number
	30°	106980304600080
	45°	106980454600080

Grip tube ER	Fixing axis (BA) max.	Article number
900 mm	1.118 mm	109507004600070
1.150 mm	1.368 mm	109507014600070
1.500 mm	1.718 mm	109507024600070

EPN 950  
Stainless steel

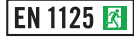


Length	Article number
55 mm	119007914301030
75 mm	119007924301030
95 mm	119007934301030

\*Grip tube has to be ordered separately  
\*\* Please see our notes



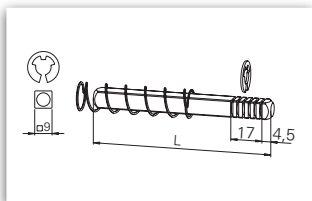
**EPN 950 ▪ Pushbar**



EPN 950 Aluminium F1 coated *	Rotation angle	Article number
	30°	106980303000080
	45°	106980453000080

Grip tube steel zinc-plated Aluminium F1 coated	Fixing axis (BA) max.	Article number
900 mm	1.118 mm	109507003000070
1.150 mm	1.368 mm	109507013000070
1.500 mm	1.718 mm	109507023000070

EPN 950  
Aluminium F1 coated \*\*



Length	Article number
55 mm	119007914301030
75 mm	119007924301030
95 mm	119007934301030

\*Grip tube has to be ordered separately  
\*\* Please see our notes



ECO Schulte GmbH & Co. KG  
Iserlohner Landstraße 89  
D - 58706 Menden

Telefon: +49 2373/9276-0  
Fax: +49 2373/9276-40

[info@eco-schulte.de](mailto:info@eco-schulte.de)  
[www.eco-schulte.de](http://www.eco-schulte.de)

© ECO Schulte GmbH & Co. KG - Änderungen vorbehalten  
© ECO Schulte GmbH & Co. KG - Subject to change