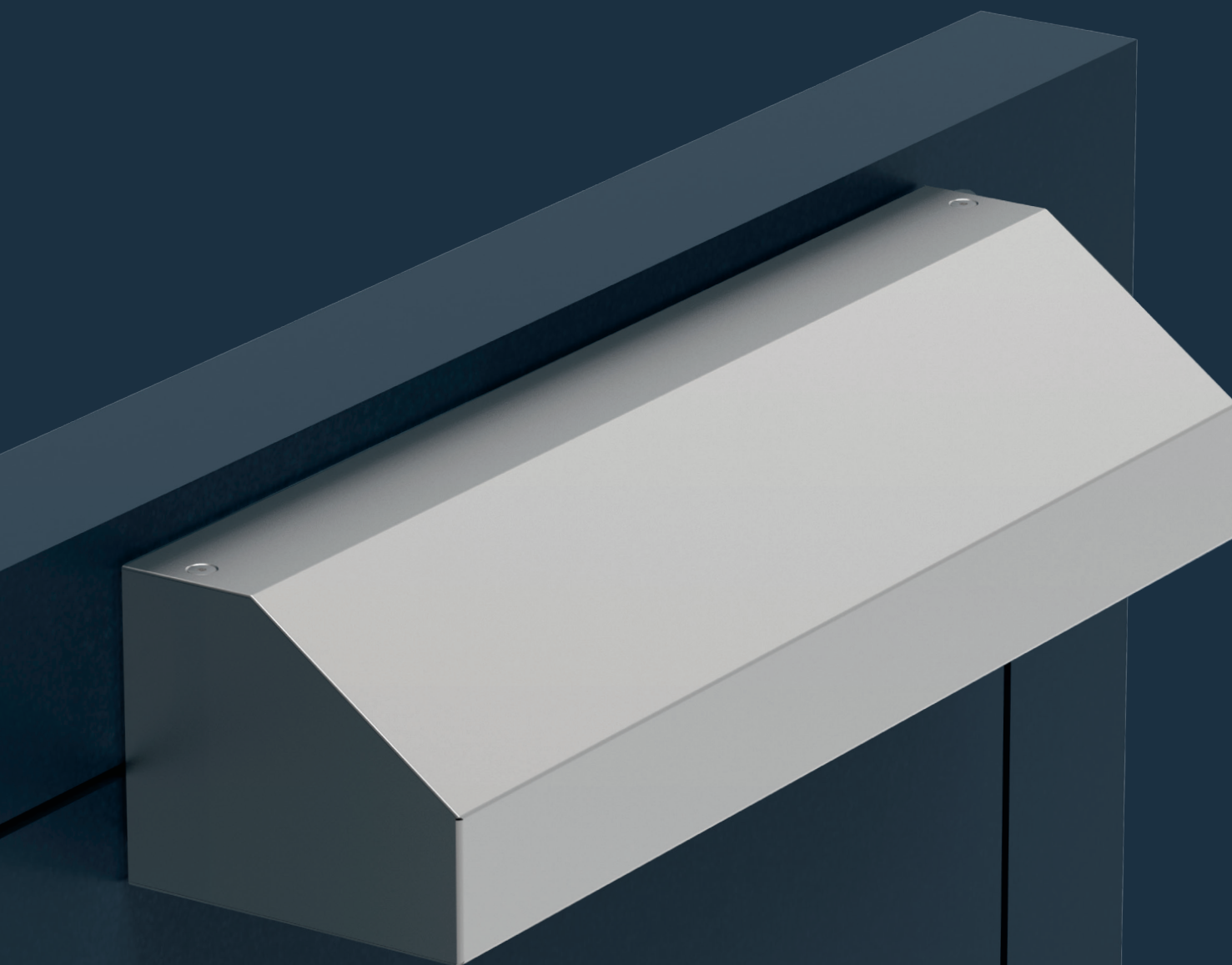
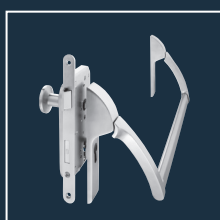
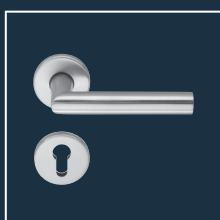


FTA ECO-Vent^{TS-62}

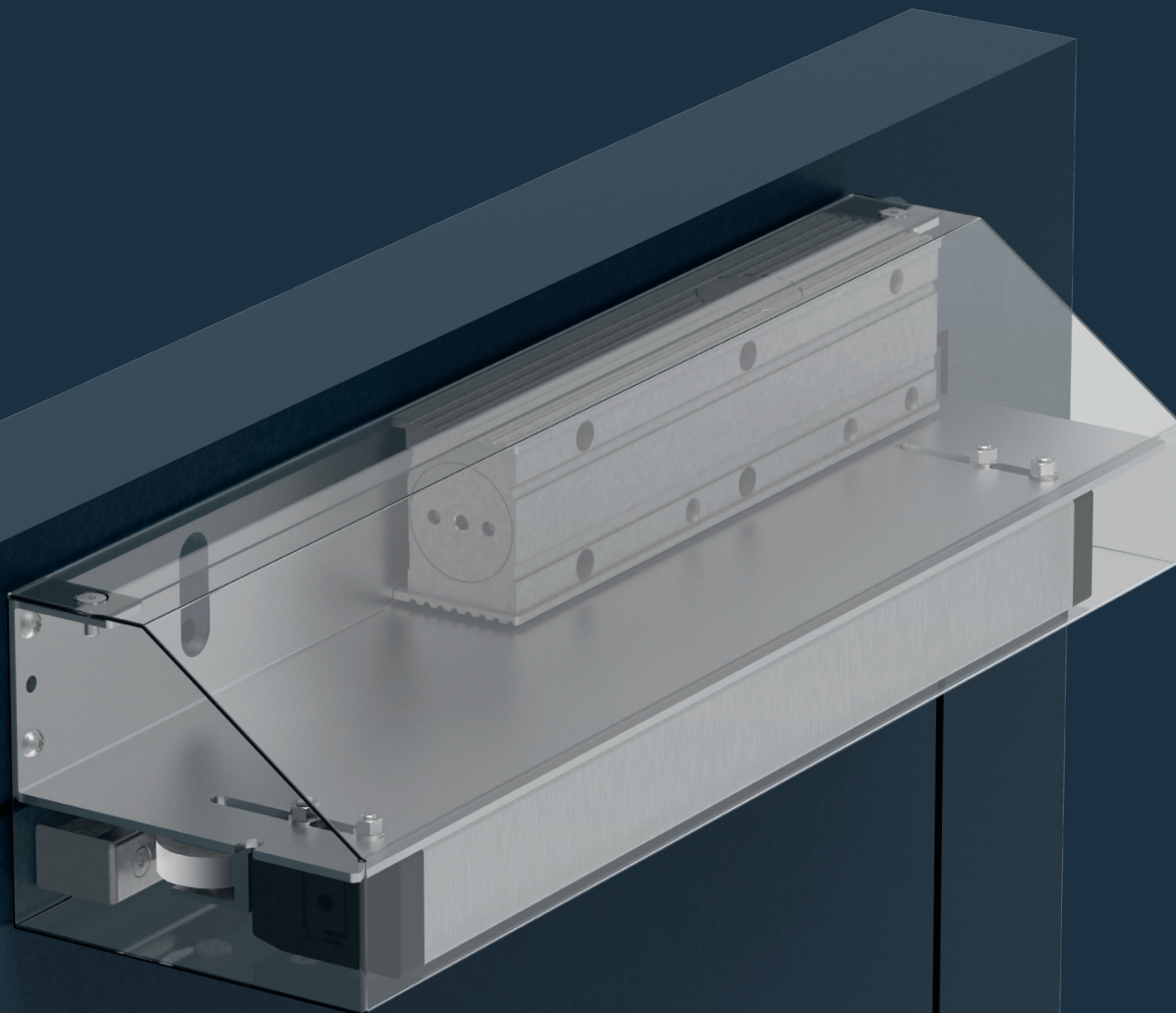
Product information



■ SYSTEM TECHNOLOGY FOR THE DOOR



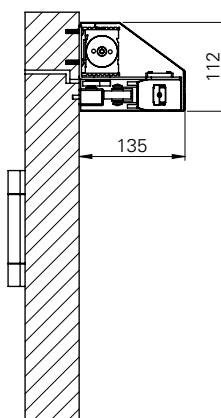
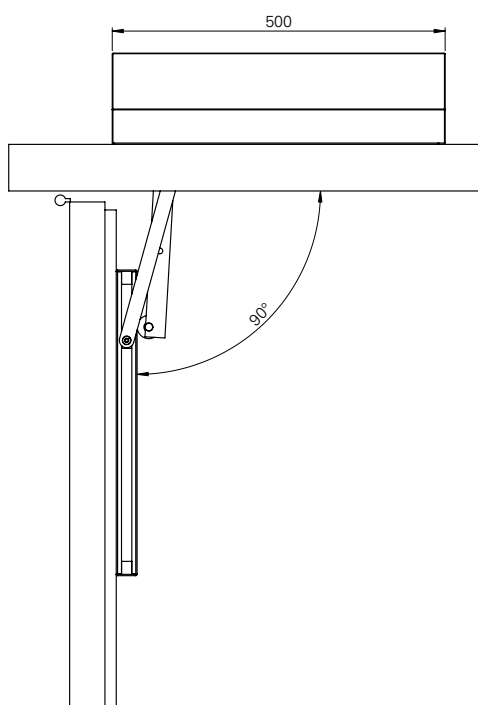
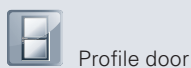
FTA ECO-Vent_{TS-62}



Product characteristics

Closing force (continuously adjustable)	according to EN standards	2 – 5
Door width	≤ 1,250 mm	■
Dimensions (incl. mounting plate)	Length in mm	500
	Depth in mm	135
	Height in mm	112
Assembly angle		■
Push side		■
DIN L / R		■
Latching speed (continuously adjustable)		■
Closing speed (continuously adjustable)		■
Back check (continuously adjustable)		■
Delayed action (continuously adjustable)		■
Required space above the FTA ECO-Vent for fixing the screw	in mm	30
Profile width min.	in mm	75
Rated voltage	(± 20%), max.	24V DC
Residual ripple		max 2Vp
Breaking current		1.4 A
Rated current		1 A
Torque max.	during opening and closing	215 Nm (600 N)
Opening angle max.		90°
Programmable contact max.		24V DC/ 0.5 A
Running time	(0° - 90°)	45 s (2.0°/s)
Tested acc. to EN / DIN	EN 1154 EN 12101-2	
Meet requirements	PMR ERP DIN 18040 DIN SPEC 1104	
RWA ventilation solution		RWA
Certified according to EU regulations		CE

- Yes
- No
- Optional



FTA ECO-Vent ■ Interaction of two forces



Order information

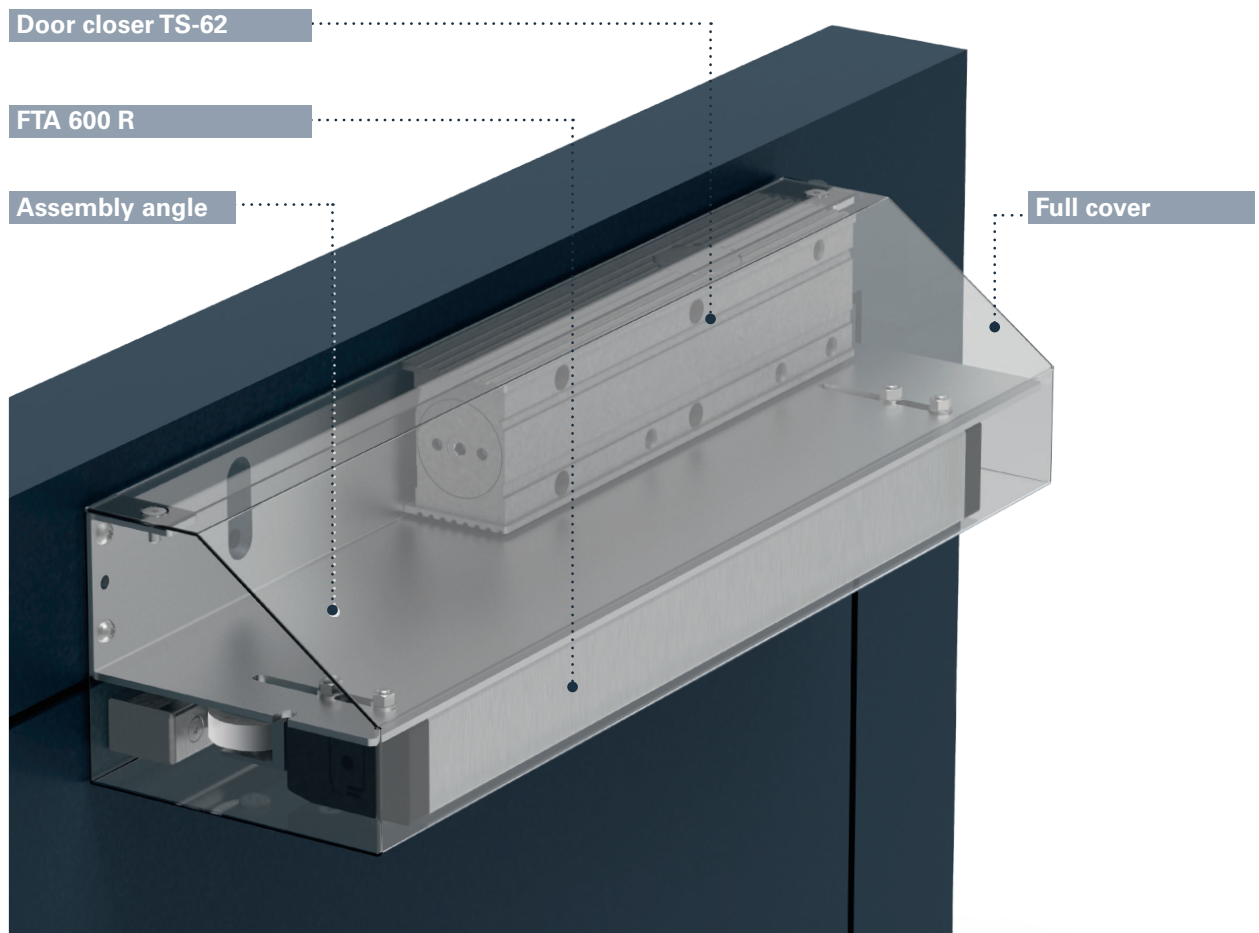
FTA ECO-Vent

Product information

- ECOMount: Time- and cost-saving installation through interior assembly of the door closer and folding arm drive.
- ECOuniq: Unique – every component on the same side. Door closers and FTA are fitted at the same level in the inside of the door only.
- ECOvalve: Simple, high-precision and permanently secure adjustment of all parameters of the closing process using a standard Allen key.
- ECOcover: The entire product is covered with an elegant stainless-steel cover
- ECOupgrade: Easy retrofitting in one product. No floor-based door closer or concealed door closer required.
- ECOScrew: The advantages compared with conventional cross-head and slotted-head screws include a higher torque. Torx minimises wear, low risk of driver slipping, thus minimised damage to components.
- Aumüller plug: Contains a strain relief system as per **DIN EN 60335-1** and is also secure against being twisted; the locking hooks prevent the plug from being pulled out. This plug is compatible with all Aumüller products.
- ECO2in1: This product can be assembled on escape route doors with RWA ventilation and also fulfils the **escape route** and the **automatic opening** as well as the normal door function as per **DIN SPEC 1104**.

FTA ECO-Vent, great in combination

Property doors have many challenges, particularly when escape routes need to be assured and smoke/heat extraction requirements and safety need to be combined. The new FTA ECO-Vent can meet all these challenges with one system. It operates in day-to-day operation like a normal door closer with the highest level of access comfort; in the event of a panic it operates like an escape route opener and in the event of smoke extraction like an RWA opener.



Important notes

FTA ECO-Vent

Product features - customer benefit

Supply ventilation opening for natural smoke and heat extraction systems with standard door elements

- Realisation that satisfies standards and saves space
- With an opening angle of 90 degrees
- A cost-effective solution, compared to the use of automatic doors

The roller of the folding arm drive runs along the slide rail of the door closer

- Time- and cost-saving installation through unique interior assembly of the door closer and folding arm drive.
- The two components are fitted at the same level

Use of standard components

- Simplifies storage and lowers operating and maintenance costs

Networking option

- Compatible with all Aumüller products and all other common RWA system suppliers.

Article number

FTA ECO-Vent	Art. no.
FTA ECO-Vent DIN-L	5030049004
FTA ECO-Vent DIN-R	5030049005

FTA ECO-Vent
 Explanatory film
 → bit.ly/2T5f2UA



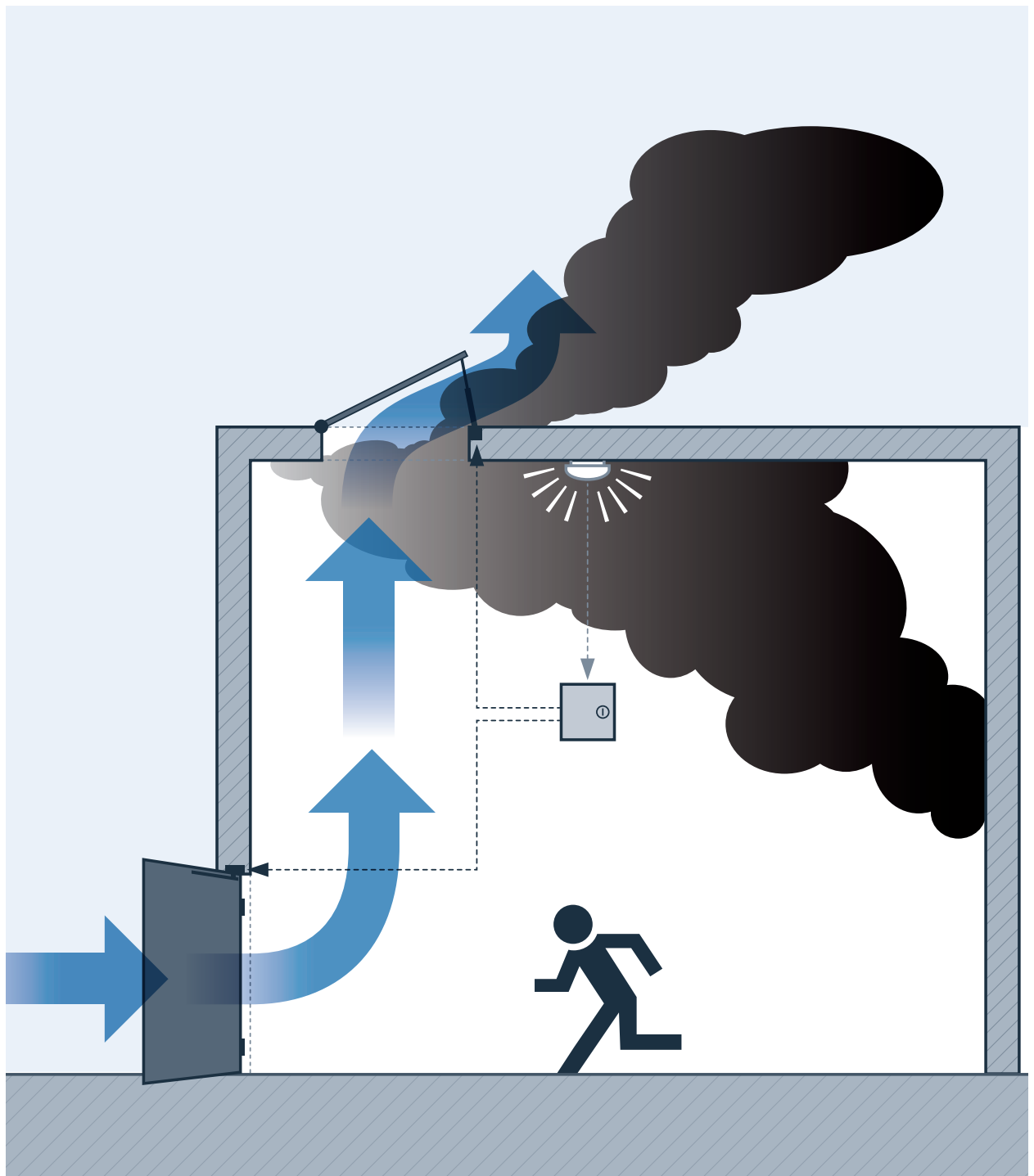
ECO

Smoke extraction concept

FTA ECO-Vent

Smoke extraction concept

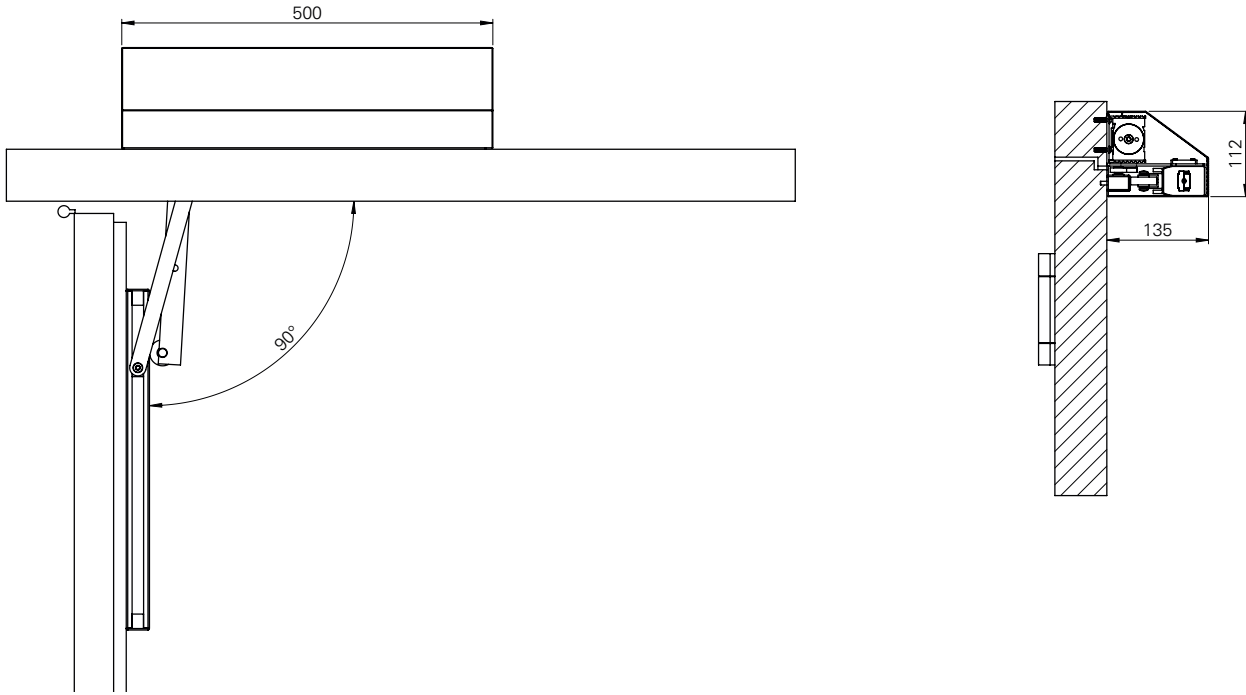
For smoke extraction concepts based on natural uplift principles, precisely trimmed opening of doors and windows is necessary to ensure that poisonous gases escape from the building as quickly as possible. Over a certain period, this produces stable, low-smoke air layers near the floor that allow people to escape by themselves, thus saving many lives. Smoke extraction also makes the fire brigade's job more efficient and prevents or at least delays the dreaded flash-over, in which pyrolysis gases can ignite suddenly.



Technical drawing

FTA ECO-Vent

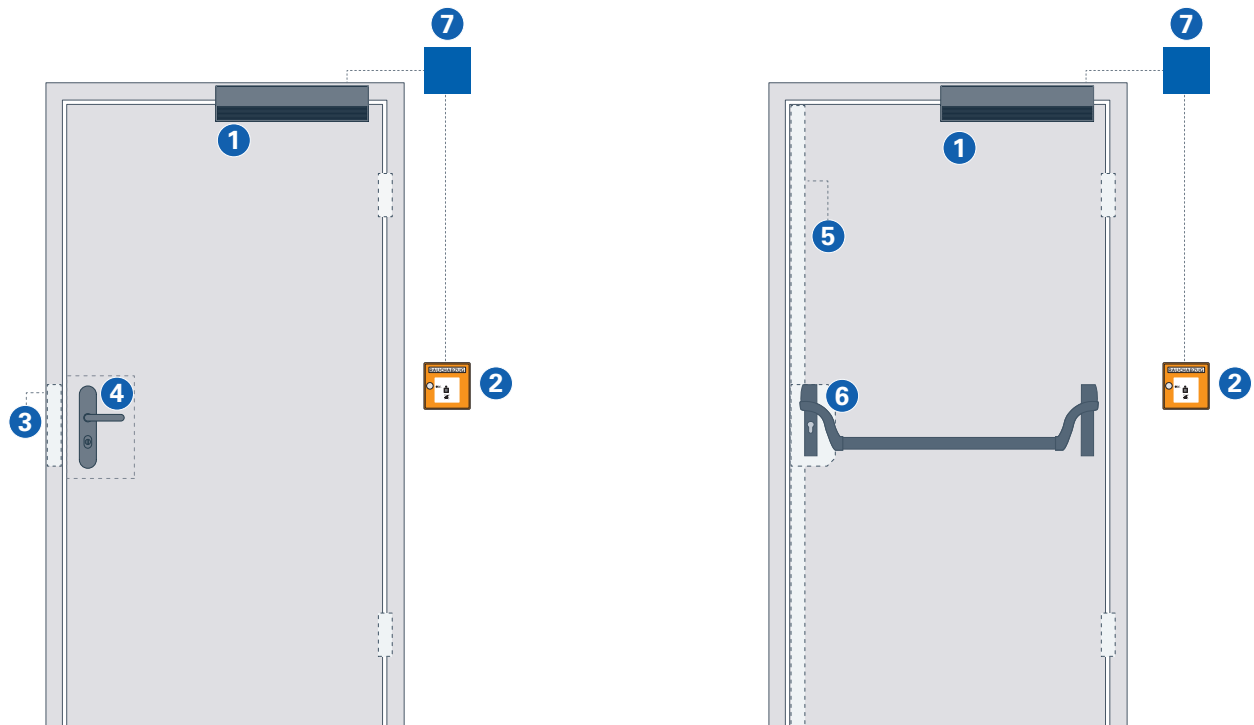
Technical drawing



Usage recommendation

- 1 FTA ECO-Vent
- 3 E-strike
- 5 Motor lock
- 7 Smoke / heat vent control
- 2 Emergency button for smoke extraction
- 4 Handle
- 6 Panic bar

Installation only possible on the push side



ECO Schulte GmbH & Co. KG

Iserlohner Landstraße 89

D-58706 Menden

Telephone +49 2373 9276 - 0

Telefax +49 2373 9276 - 40

info@eco-schulte.de

www.eco-schulte.de

■ SYSTEM TECHNOLOGY FOR THE DOOR

